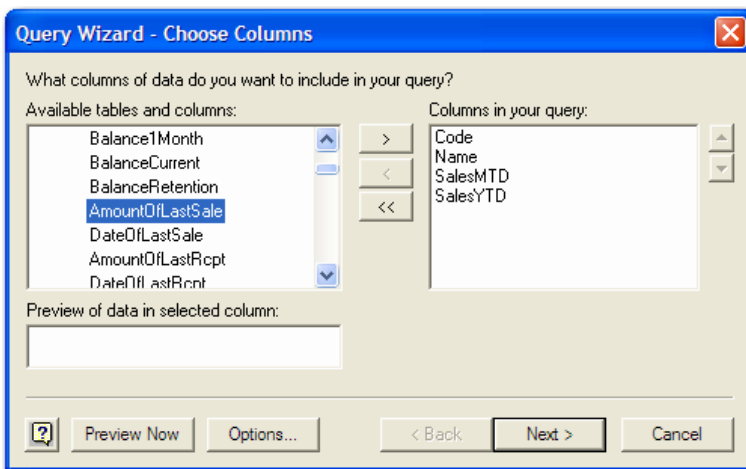


Prophet ODBC

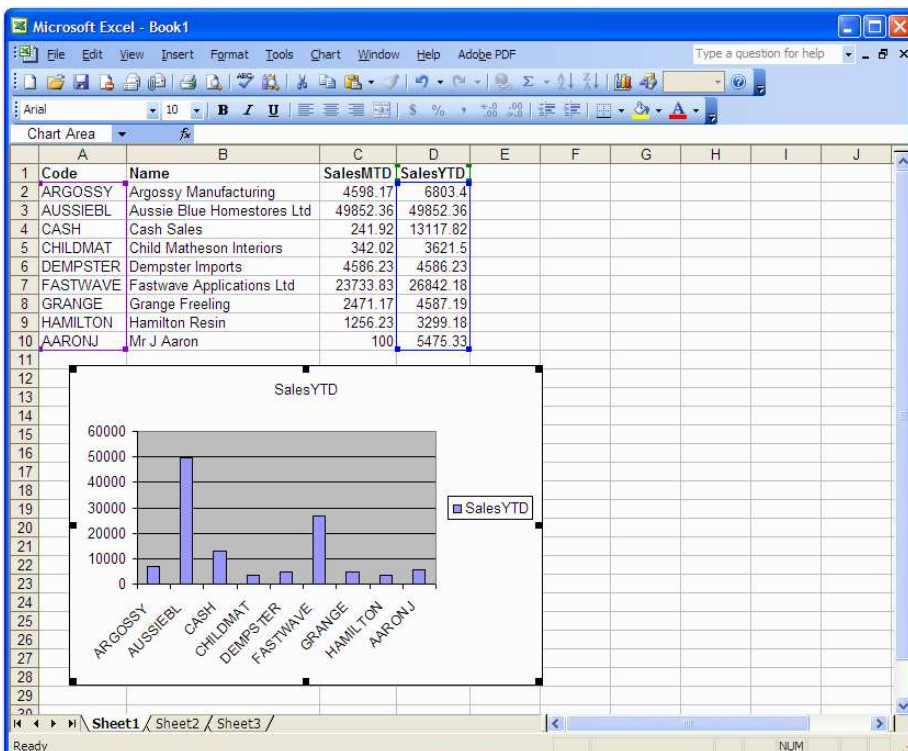
Industry Standard Access to your Prophet data

ODBC stands for 'Open Database Connectivity', an international standard for accessing stored data. Our ODBC driver opens up a whole new window of opportunity for accessing your Prophet accounting data in other Windows applications.

Using data generated from your accounting software, you can create a new report or visually analyse your data using programs such as Microsoft Excel. This will allow you to quickly and easily create ad-hoc views of your data without the need to re-key information.



This screen shows Prophet Accounts receivable customer data being selected within MS Excel



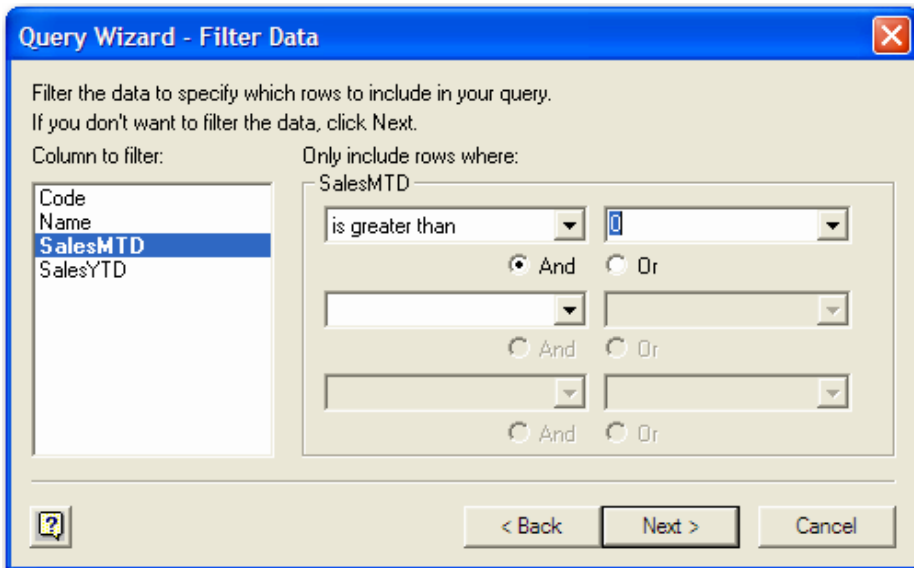
This is an example of customers and their sales MTD and YTD, with a graph comparing YTD figures

Features

With ODBC your Prophet accounting data can be accessed by other ODBC compliant applications, opening up a whole new world of data analysis and custom user reporting.

- Export to MS Word, Excel, Access and many other Windows applications
- Link your Prophet data to any ODBC compliant application
- Easy data selection process
- View your data graphically with charts and tables
- Create your own reports

Export of data



MS Query wizard screen

You can export data from any of your Prophet modules. For example, you can open your Prophet General Ledger or Sales Analysis data in MS Excel and do year-to-year comparisons, or graph your data for a sales meeting. You can export names and addresses of your customers into MS Excel and use MS Word to mail merge. This is an ideal way to keep your customers informed of your latest product specials or manage your debtors.

Data Queries

Using a Query wizard, such as MS Query, you can isolate the information you require from each module. You can then filter this information and view it prior to exporting.

Reporting Flexibility

With Prophet ODBC, you can transfer data from Prophet, perform queries on your data and access it in a manner that best suits your needs and experience. As different companies have different requirements, you don't need to wait until your ideal report is created. You can design your own using the tools which you are already familiar.

Module Compatibility

The ODBC driver works with all of Prophet's main modules and is purchased as an additional module.

General Ledger
Cashbook
Accounts Receivable
Accounts Payable
Inventory Control
Special Pricing
Fixed Assets
Bill of Materials
Sales Order Entry
Sales Analysis
Purchase Ordering
Purchase Analysis
Foreign Currency
Payroll
Alex
Report Designer
Data Transfer
FlexiData
ODBC
OLE DB
Archiver



Attaché Software New Zealand Pty. Limited
Level 5, 93 Grafton Road, Parnell, Auckland
PO Box 37-623, Parnell, Auckland
Tel + 64 9 302 9390
Fax + 64 9 302 9391

Attaché Software Australia Pty. Limited
18 Berry Street, North Sydney NSW 2060
PO Box 1070, North Sydney NSW 2059
Tel + 61 2 9929 8700
Fax + 61 2 9925 0481

Email sales@attache.co.nz
Website www.attachesoftware.com