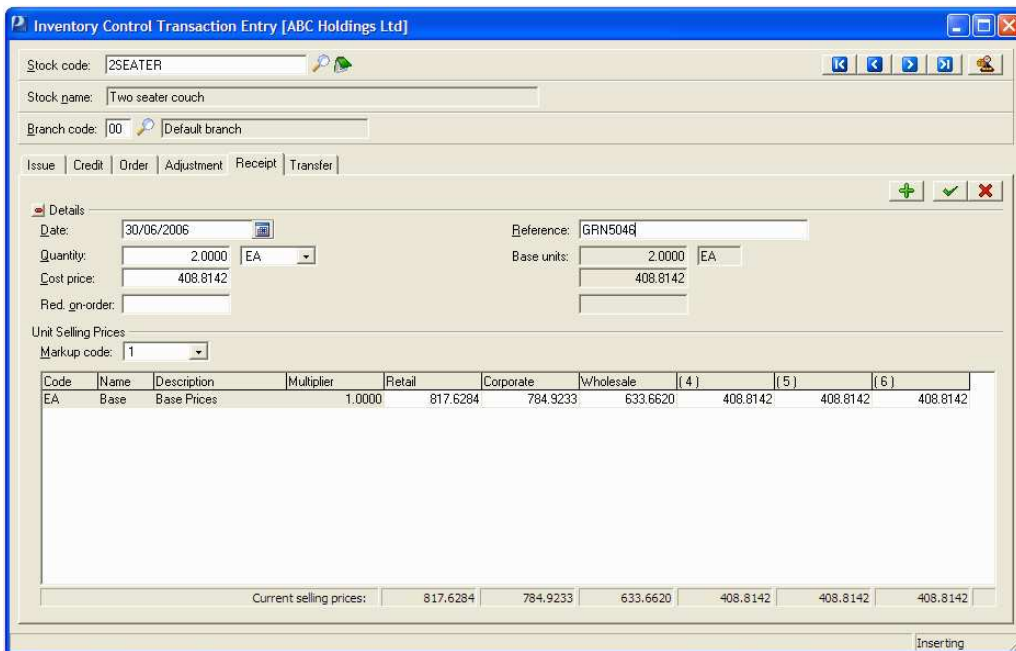


Prophet Inventory Control

Prophet's Inventory Control module provides you with a complete stock management system. It even includes facilities to account for non-reducing items and services such as labour, freight and insurance. Stock quantities and their prices can be set up to an accuracy of four decimal places, and prices can be generated by mark-ups. Analysis is available for monthly and yearly sales, gross margins, stock valuations (by standard, average and latest cost) and stock quantities (in stock and on order).

There is the facility to enter mark-up percentages for all six selling price lists and to set percentage discounts for a given purchase quantity. You can also assign stock categories and product and purchase groups for which the total sales for the month and year-to-date are held. Stock may be "committed", or allocated to the Sales Order Entry, Bill of Materials and PowerLink Job Costing modules. Stock on order figures that are generated by the Purchase Ordering module are displayed.



Code	Name	Description	Multiplier	Retail	Corporate	Wholesale	(4)	(5)	(6)
EA	Base	Base Prices	1.0000	817.6284	784.9233	633.6620	408.8142	408.8142	408.8142

Current selling prices: 817.6284 784.9233 633.6620 408.8142 408.8142 408.8142

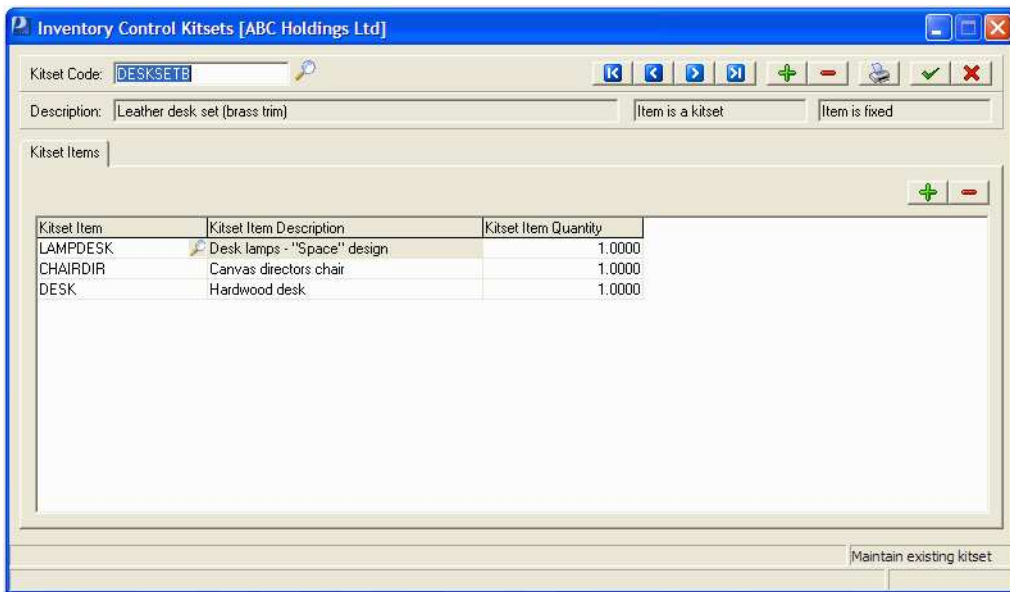
Inventory Control, Transaction Entry, Receipts Screen

Transaction Entry

Transactions are generated through the integrated Prophet modules, or they can be entered onto a single transaction entry screen under a number tabs. The transaction entry interface is consistent with other entry screens in the system and includes receipts, adjustments, transfers and credits for returned items (includes wastage option). Access to entry of individual transaction types can be controlled for groups of users allowing the administrator to control who has rights to create a credit for example.

Kitsets

The Kitsets feature allows you to group products together for sale using a Kitset code allowing rapid order entry.



Inventory Control, Kitsets screen

Special Pricing Integration

The Inventory Control module integrates to the optional Special Pricing module for even greater pricing flexibility and control, allowing prices to be maintained for individual customers for example.

Features

- Comprehensive detailing of stock items
- Multi-warehouse / multi-branch stock holding in up to 1,000 locations
- Wastage and usage transactions
- Quantity discounts
- Six selling price lists + integration to Special Pricing for extra flexibility
- User defined selling price list names
- Customer product discount schedule
- Fixed, variable and charge stock items
- Standard, average and latest cost pricing
- Kitset management
- Preferred supplier details for each stock item
- Multi branch transactions
- Analysis by category
- Analysis by product group and purchase group
- Comprehensive sales reports
- User definable multiple stock units (each, dozen, crate)
- Percentage markup facilities
- Defaults for each user for branch and stock balance pop up behaviour

Module Integration

The Inventory Control module integrates to the Accounts Payable, Sales Order Entry, Purchasing, Bill of Materials, Special Pricing, General Ledger and PowerLink Job Costing system.

- General Ledger
- Cashbook
- Accounts Receivable
- Accounts Payable
- **Inventory Control**
- Special Pricing
- Fixed Assets
- Bill of Materials
- Sales Order Entry
- Sales Analysis
- Purchase Ordering
- Purchase Analysis
- Foreign Currency
- Payroll
- Alex
- Report Designer
- Data Transfer
- FlexiData
- ODBC
- OLE DB
- Archiver



Attaché Software New Zealand Pty. Limited
Level 5, 93 Grafton Road, Parnell, Auckland
PO Box 37-623, Parnell, Auckland
Tel + 64 9 302 9390
Fax + 64 9 302 9391

Attaché Software Australia Pty. Limited
18 Berry Street, North Sydney NSW 2060
PO Box 1070, North Sydney NSW 2059
Tel + 61 2 9929 8700
Fax + 61 2 9925 0481

Email sales@attache.co.nz
Website www.attachesoftware.com