

## Attaché Manufacturing

### Control your production processes and manage your costs

Attaché Manufacturing gives you the tools to control and track production from quote to dispatch. Specifically designed for the small to medium sized manufacturer, it's simple to use and includes features and flexibility you would expect in higher-end packages.

#### Define kits (bills of materials)

- Create your formulae or kit definitions using Attaché product information.
- Each kit can have unlimited levels of sub-assemblies and components; cost is calculated based on component costs.
- Include build instructions, other information (such as hazard warnings) and sequence numbers.
- Create new kits by copying existing kits; replace obsolete components via global maintenance.
- Check that adequate stocks of components are available prior to committing to a build.

#### Create manufacturing quotes

- If you make to order, standard kits can be used in quotes then customised to suit.
- Use the default margin and predefined templates to standardise and streamline quote creation.

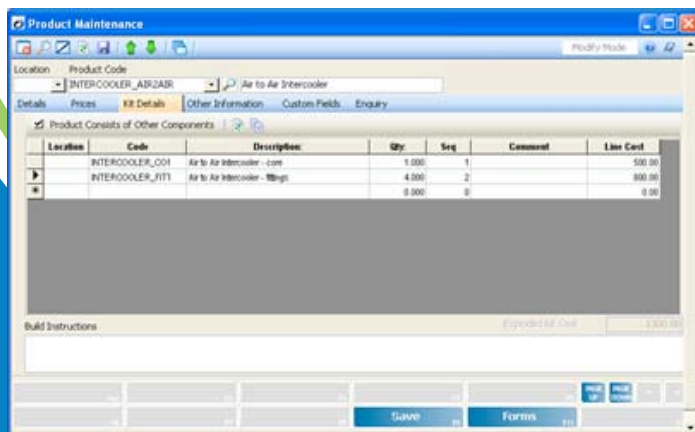
- Negotiated supplier pricing can be specified, and quote profitability monitored on-screen.
- Accepted quotes can be converted to manufacturing requisitions so that no information is lost.

#### Control production processes

- Generate a Build List for a manufacturing batch; includes instructions and can be modified to suit individual needs.
- A job is automatically created for the build, allowing the allocation of employee time if needed.
- Stock can be auto-issued to the build (if all components are in stock) or individually issued.
- Various reports can be printed at any time, such as Job Cost Details and Work in Progress.

#### Track batch and serial numbers

- Assign batch numbers to manufacturing batches and use when invoicing customers.
- Record serial numbers against components issued to manufacturing jobs.
- Generate reports to track any component or manufactured product using batch number, date, supplier or customer.
- Extra information can be held against batch or serial numbers, for example: warranty period or expiry date.



#### Total inventory control

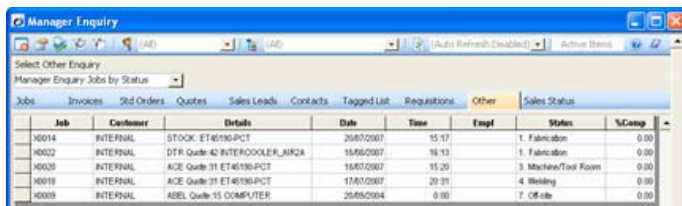
When a build is complete, stock levels of components are reduced appropriately and finished goods are ready for invoicing.

## Material requirements and production planning

- Enter the anticipated monthly production level of individual products into the Master Schedule (displays up to 12 months at a time across the screen).
- Anticipated production levels can be set to defaults based on historical sales data with a specified percentage increase or decrease.
- View component items required for a particular month or range of months and supplier purchasing requisitions can be automatically generated.
- Quantities of finished items required to be produced during the month are listed, allowing the operator to allocate a date and a shift to each item.
- Manufacturing requisitions are then automatically created for the month's requirements, and requisitions to be completed in a particular shift can be viewed.
- Job cards and reports can be generated, and requisitions manually added or deleted.

## Create custom fields and reports

- Add custom fields to products and requisitions to hold more details.
- Customise reports and include data captured in custom fields.
- Create sophisticated onscreen enquiries for customers, products, jobs and more. Enquiries can include parameter selection to give report-like functionality.



The screenshot shows a window titled 'Manager Enquiry' with a menu bar and a toolbar. Below the menu bar is a dropdown menu 'Select Other Enquiry' and a text box 'Manager Enquiry Jobs by Status'. The main area contains a table with columns: Job, Customer, Details, Date, Time, Empl, Status, and %Comp. The table lists several jobs with their respective details and dates.

Job	Customer	Details	Date	Time	Empl	Status	%Comp
40014	INTERNAL	STOCK: ET46196PCT	20/07/2007	15:17	1	Fabrication	0.00
40002	INTERNAL	DTA Quib 42 INTERCOOLER_AR2A	18/07/2007	16:13	1	Fabrication	0.00
40030	INTERNAL	ACE Quib 31 ET46196PCT	18/07/2007	15:20	3	Machine/Tool Room	0.00
40018	INTERNAL	ACE Quib 31 ET46196PCT	17/07/2007	20:31	4	Welding	0.00
40009	INTERNAL	ABEL Quib-15 COMPUTER	20/06/2004	0:00	7	Off site	0.00

### Customisable view

Filter by employee or sales rep code; active or complete records. Sort columns into ascending or descending order. Copy records and paste into Microsoft Excel or emails.

## Maintenance and QA requirements

- Create jobs in other departments to monitor and control maintenance or non-conformance issues, which can be linked to the relevant manufacturing batch.
- Job history can be used to archive QA documentation.

## See the big picture

- The Managers Enquiry screen allows a high-level view of business activity.
- Enquiries are customisable, so you can see information quickly and easily in the format you need.
- Drill into jobs, requisitions and quotes for more detail.

## Further customisation

- The Solution Builder module allows almost unlimited customisation. From simple data entry forms, to powerful applications with email and Internet support.
- Rename or hide standard fields; program fields to process instructions when certain events occur, such as generating an email when job status is changed or when deadlines are imminent.
- Solutions can be created to allow integration with other devices, such as barcode scanners or handheld computers.

## Attaché Manufacturing

Attaché Customers  
Attaché CRM  
Attaché Suppliers  
Attaché Products & Services  
Attaché Job Costing  
Attaché General Ledger  
Attaché Payroll  
Attaché Alex  
Attaché ODBC  
Attaché Archive



### Attaché Software Australia Pty. Limited

18 Berry Street, North Sydney NSW 2060  
PO Box 1070, North Sydney NSW 2059  
Tel +61 2 9929 8700  
Fax + 61 2 9925 0481

### Attaché Software New Zealand Pty. Limited

Level 5, 93 Grafton Road, Parnell, Auckland  
PO Box 37-623, Parnell, Auckland  
Tel + 64 9 302 9390  
Fax + 64 9 302 9391

Email [info@attachesoftware.com](mailto:info@attachesoftware.com)  
Website [www.attachesoftware.com](http://www.attachesoftware.com)