



Super Export

Super Export for Attaché Payroll

Super Export for Attaché Payroll reduces the time and administration required to manage your superannuation payments. Released to coincide with the introduction of Superannuation Choice legislation in Australia, Super Export provides two different methods to export superannuation details to super funds.

Super Export is very easy to use. Once you have set up details of your super funds and your employees' super accounts, you process employee pays in the usual way. Then simply run Super Export and select the format you require.

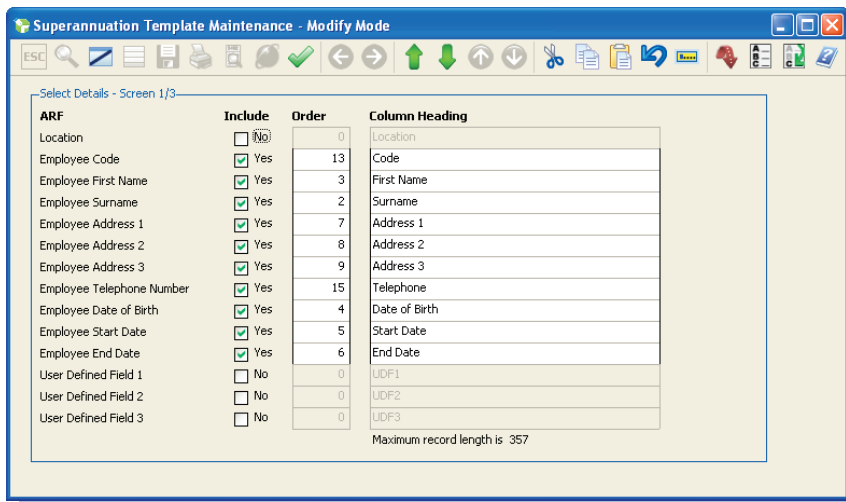
- Export templates (payments separate)
Super Export allows you to easily export your superannuation information in the required format for each super fund you deal with. Super Export includes ready-to-use templates for leading super funds such as HESTA, Cbus and ARF or you can use the simple template designer to create templates for other funds. Then, when your superannuation payments are due, you run Super Export to create the appropriate files and send them to the funds. Your payments are sent separately, in the usual way.

- SwimEC/BECS (payments included)
The payments included method uses the new Australian superannuation industry standard (swimEC) file format, which includes all super details including payment information in one file. Once Super Export has created the export file, you can then simply upload or send the file to your participating super provider or bank.

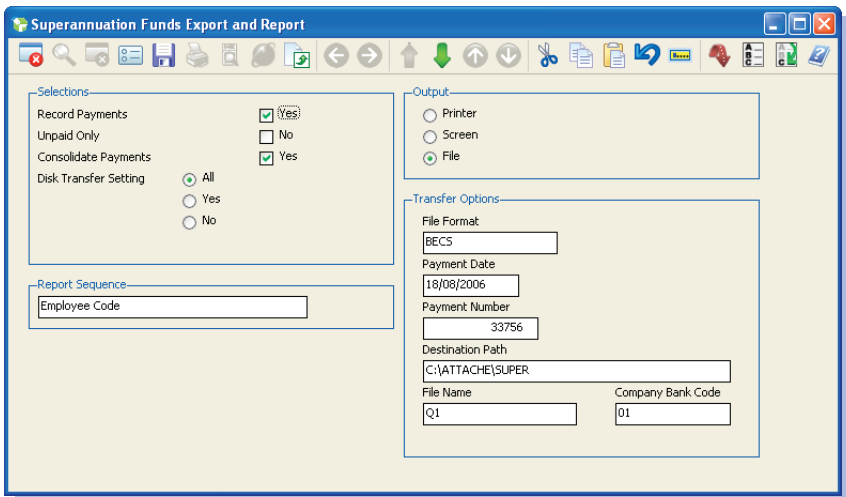
The choice of which format to use depends on your super fund, clearing house or financial intermediary.

Key benefits

- easy handling of employee superannuation payments
- choose from the industry-standard swimEC/BECS format, supplied formats for many leading super funds or design your own
- full integration with Attaché Payroll



If your fund or clearing house doesn't use the swimEC/BECS standard, you can create templates that capture their specific requirements.



Super Export creates a file of your super payment details (and actual contribution payments if using the SwimEC/BECS format) for electronic transfer to a fund or a clearing house.



Attaché Software Australia Pty. Limited
 18 Berry Street, North Sydney NSW 2060
 PO Box 1070, North Sydney NSW 2059
 Tel +61 2 9929 8700
 Fax +61 2 9925 0481

Attaché Software New Zealand Pty. Limited
 Level 5, 93 Grafton Road, Parnell, Auckland
 PO Box 37-623, Parnell, Auckland
 Tel + 64 9 302 9390
 Fax + 64 9 302 9391

Email info@attachesoftware.com
 Website www.attachesoftware.com