



## Attaché General Ledger

### Financial information tailored for you

The ability to customise both the chart structure and reporting options makes the Attaché General Ledger one of the most powerful available. General Ledger is at the heart of the Attaché system, connecting all other areas, but it can also run as a standalone system.

#### Account flexibility

You can produce accounts, and appropriate consolidations, by:

- project
- branch
- department
- cost centre, and more.

To achieve such flexibility, the account code can be up to 12 characters long, with the ability to split the code into multiple sub-account divisions.

#### Customised reporting

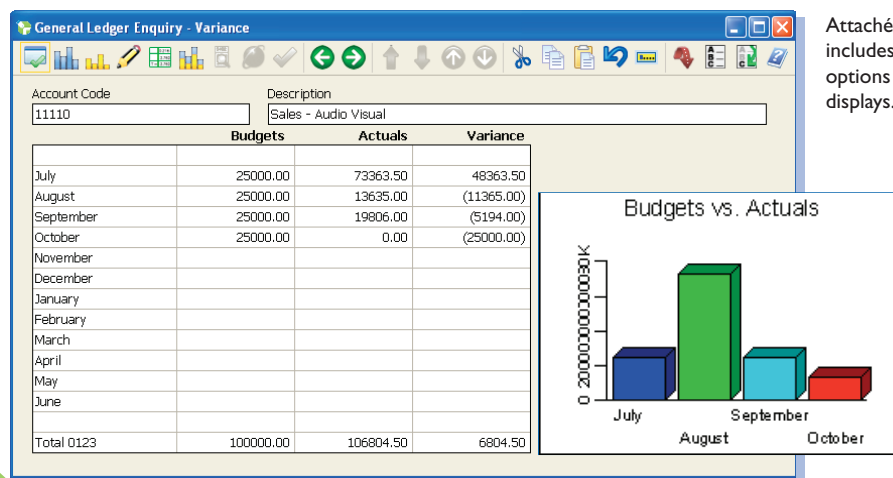
When structuring your chart of accounts you can design your profit & loss / balance sheet reports, including headings, columns, accounts, totals, and more.

The system includes three modifiable sample charts, or you can easily create your own. Charts can be copied from one company to another, with balances cleared automatically.

Further customisation is available by adding the Financial Reporter option (see over), or by using Attaché ODBC to export data to other applications for further analysis.

#### Choice of budget entry methods

You can set up and change period budgets for each general ledger account. Choose from eight budget entry methods: annual, escalate, equal, index, interpolate, percentage, period, and range. A budget variance report shows actual and budget amounts for the period and year to date.



Attaché General Ledger includes multiple budgeting options with built-in graphic displays.

## Additional General Ledger features

- On the profit & loss / balance sheet, show one account as a percentage of another
- easy bank reconciliation
- provides up to 13 periods
- password control for changing periods
- show net and gross profits on the trial balance
- repost accruals and standing journals as often as required, reducing the amount of data entry
- Postings received from other modules can be period or date based.

### Notes

This handy option lets you store over 150 lines of comment on any account, such as audit comments, fixed asset details, etc.

## Financial Reporter option

Most businesses using Attaché General Ledger add the Financial Reporter option because it makes traditional accounting reports much more useful to operational management. It's a powerful tool but you don't have to be a programmer to use it!

Financial Reporter comes with a number of standard reports that you can simply tailor to suit your needs. Plus you can add custom reports of your own — up to 100 per user.

### Other key features include:

- Two modes: *Setup* for report designers and *Print only* for operators
- Customised headings, sections and footers
- Periods displayed can automatically roll forward based on the current or selected period
- Percentages on both period- and year-to-date fields
- Import and export report layouts from one user to another
- Historical data can be entered for previous years
- Choose to omit or include zero-balance accounts
- Reports can be sent to the printer or screen or to a file for import into other applications (such as Microsoft Excel)

September Actual	September Budget	Variance	%	YTD Actual	YTD Budget	Variance
3,732.50	0.00	3,732.50		22,809.50	0.00	22,809.50
19,806.00	25,000.00	(5,194.00)	79.22	106,804.50	75,000.00	31,804.50
22,697.00	0.00	22,697.00		56,607.00	0.00	56,607.00
185.00	0.00	185.00		370.00	0.00	370.00
46,420.50	25,000.00	21,420.50	185.68	186,591.00	75,000.00	111,591.00
943.05	0.00	943.05		5,903.93	0.00	5,903.93
45,477.45	25,000.00	20,477.45	181.91	180,687.07	75,000.00	105,687.07
2,319.27	0.00	2,319.27		14,638.71	0.00	14,638.71
7,530.22	0.00	7,530.22		40,275.39	0.00	40,275.39
17,946.22	0.00	17,946.22		44,761.90	0.00	44,761.90
100.00	0.00	100.00		200.00	0.00	200.00
27,895.71	0.00	27,895.71		99,876.00	0.00	99,876.00
(211.17)	0.00	(211.17)		(211.17)	0.00	(211.17)
(766.33)	0.00	(766.33)		(766.33)	0.00	(766.33)
4.12	0.00	4.12		4.19	0.00	4.19
26,922.33	0.00	26,922.33		98,902.69	0.00	98,902.69

You control which data is displayed, so your reports match your business needs.

Attaché Customers  
 Attaché Suppliers  
 Attaché Products & Services  
**Attaché General Ledger**  
 Attaché Payroll  
 Attaché Alex  
 Attaché ODBC  
 Attaché Archive



**Attaché Software Australia Pty. Limited**  
 18 Berry Street, North Sydney NSW 2060  
 PO Box 1070, North Sydney NSW 2059  
 Tel +61 2 9929 8700  
 Fax +61 2 9925 0481

**Attaché Software New Zealand Pty. Limited**  
 Level 5, 93 Grafton Road, Parnell, Auckland  
 PO Box 37-623, Parnell, Auckland  
 Tel +64 9 302 9390  
 Fax +64 9 302 9391

Email [info@attachesoftware.com](mailto:info@attachesoftware.com)  
 Website [www.attachesoftware.com](http://www.attachesoftware.com)